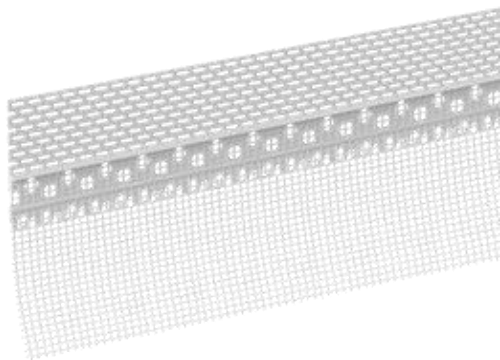


TERMINAL WITH NET FOR ATTIC



INDEX

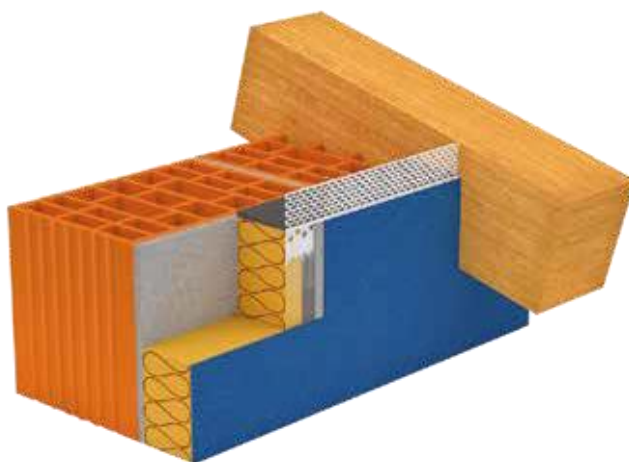
1. Data and Documentation
2. Use
3. Specifications

1. DATA AND DOCUMENTATION

Code	Description	Dimensions (mm)	Weight	Colour	Pkg. / Pallet
ZIN33-1669RT	Terminal with Mesh for Attic	h. 55 x 2.000	8.25 kg/cf.	White	50 m / 40 cf.

MATERIAL

Made of PVC and glass fibre mesh.



2. USE

Used as a nitura of the upper part of the coat, to keep the attic ventilated.

Apply the reinforcement mass over the width of the mesh strip. then insert the pro lo horizontally and lo.

In doing so, the upper edge of the ventilation flap must be flush with the upper edge of the roof rafters.

The mesh strip must be embedded and laid in the wet reinforcement mass. Subsequently, the mesh reinforcement must be introduced and embedded no to the plaster edge (at least 10 cm overlapping).

The reinforcement and stabilisation must end flush with the drainage edge.

Features	Units of Measurement	R131
Bar length	m	2
Net width	mm	135
Network overprinting		White, neutral
Net fixing		Welded
Network	g/m2	145 g/m2
Packing unit (Pcs)	pc.	25 pcs / Pack
Packing unit (m)	m	50 m
Profile material		Polyvinyl chloride (PVC)



TERMINAL WITH NET FOR ATTIC

3. SPECIFICATION ITEMS

Entry	Description	U.M.	Price
Dak.B.ZIN33.1669RT	Under-roof terminal with rigid insect screen and heat-sealed R131 fibreglass mesh. Made of PVC and glass fibre net, grammage of 145 gr./m2 Used as a top coat finish to keep the attic ventilated. Dimensions h.55 x 2,000 mm	cf.	-