

PEGASUS PLUS CHANNEL 130 x 120



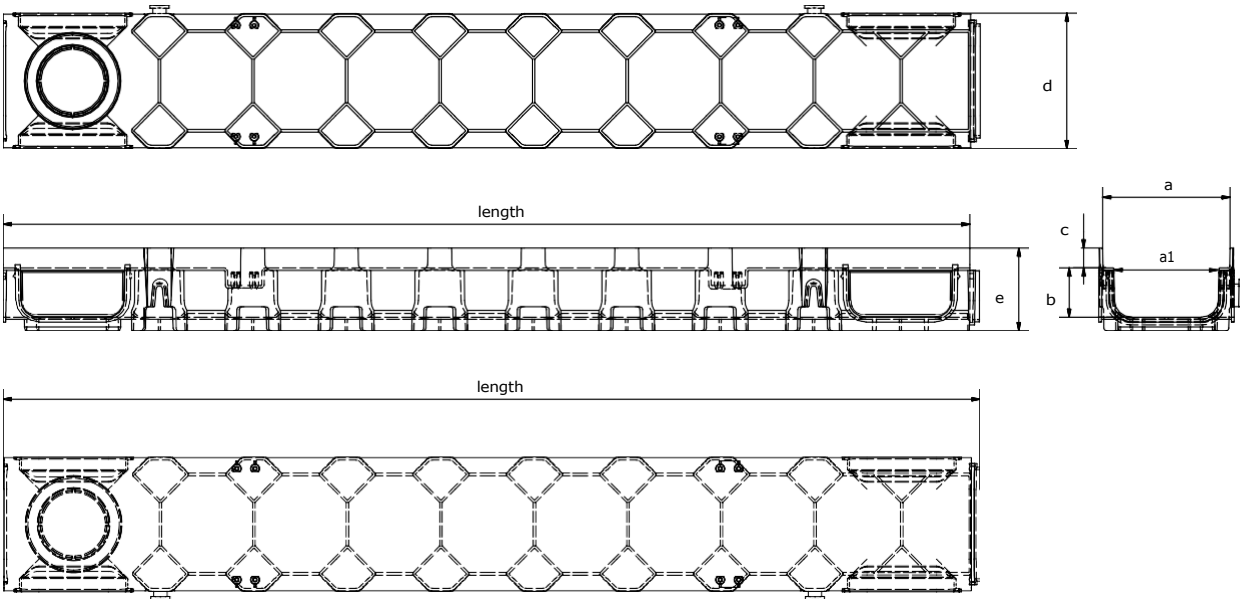
INDEX

- 1. Data and Documentation
- 2. Use
- 3. Specifications

1. DATA AND DOCUMENTATION

Code	Description	Dimensions (mm)	Weight	Colour	Pkg. / Pallet
POZ90-1310P1	Pegasus Plus 130/120	130 x 120 x 1,000	1.10 kg/pc.	Grey	1 pc. / 112 pcs.
POZ90-1310PN1	Pegasus Plus 130/120	130 x 120 x 1,000	1.10 kg/pc.	Black	1 pc. / 112 pcs.
POZ90-1310PB1	Pegasus Plus 130/120	130 x 120 x 1,000	1.10 kg/pc.	Bianca	1 pc. / 112 pcs.

MATERIAL Made of PP (polypropylene).



	a	a1	b	c	d	e	length	ø	lat. ø inf.
POZ91-1310Px	130	102	101	20	137	135	1.000	75	75/100 mm

PEGASUS PLUS CHANNEL 130 x 120

2. USE

Used for the collection and drainage of rainwater. The combination with its own range of gratings allows it to be used in predominantly pedestrian and/or light carriageway areas.

3. SPECIFICATION ITEMS

Entry	Description	Unit	Price
Dak.D.POZ90.1310Px	Supply and installation of drainage system type Pegasus Plus 130 x 120 in PP with external stiffening ribs, tongue-and-groove system between channels such as to allow assembly between one channel and the next with the relevant gratings already fixed. The gutter will have two lateral drainage diaphragms at predetermined points and a provision at the bottom for a possible drain. The gutter surface must be perfectly smooth and with low coefficient of roughness to allow maximum water flow, it must also be perfectly watertight and have no connection points with the outside. On the inside walls, the gutter must have 2 connection points per side to guarantee the blocking of the gratings. Dimensions 130 x 135 x 1000 mm.....	-	-
Dak.D.POZ90.1310P1	grey - liquid section (101 x 105).....	pc.	-
Dak.D.POZ90.1310PN1	black - liquid section (101 x 105).....	pc.	-
Dak.D.POZ90.1310PB1	white - liquid section (101 x 105).....	pc.	-