

# PVC 3D PLUS WINDOW PROFILE



## INDEX

1. Data and Documentation
2. Description
3. Use
4. Specifications

## 1. DATA AND DOCUMENTATION

Code	Description	Measures mm	Quantity cf.	Weight (kg/cf.)	Pkg. / Pallet
ZIN33-1797	Window profile with 6 mm plus mesh	2.400	72 m (30 bars)	8	40 cf. / 1,200 m.
ZIN33-1798	Window profile with 9 mm plus mesh	2.400	72 m (30 bars)	8	40 cf. / 1,200 m.

**MATERIAL** Made of PVC

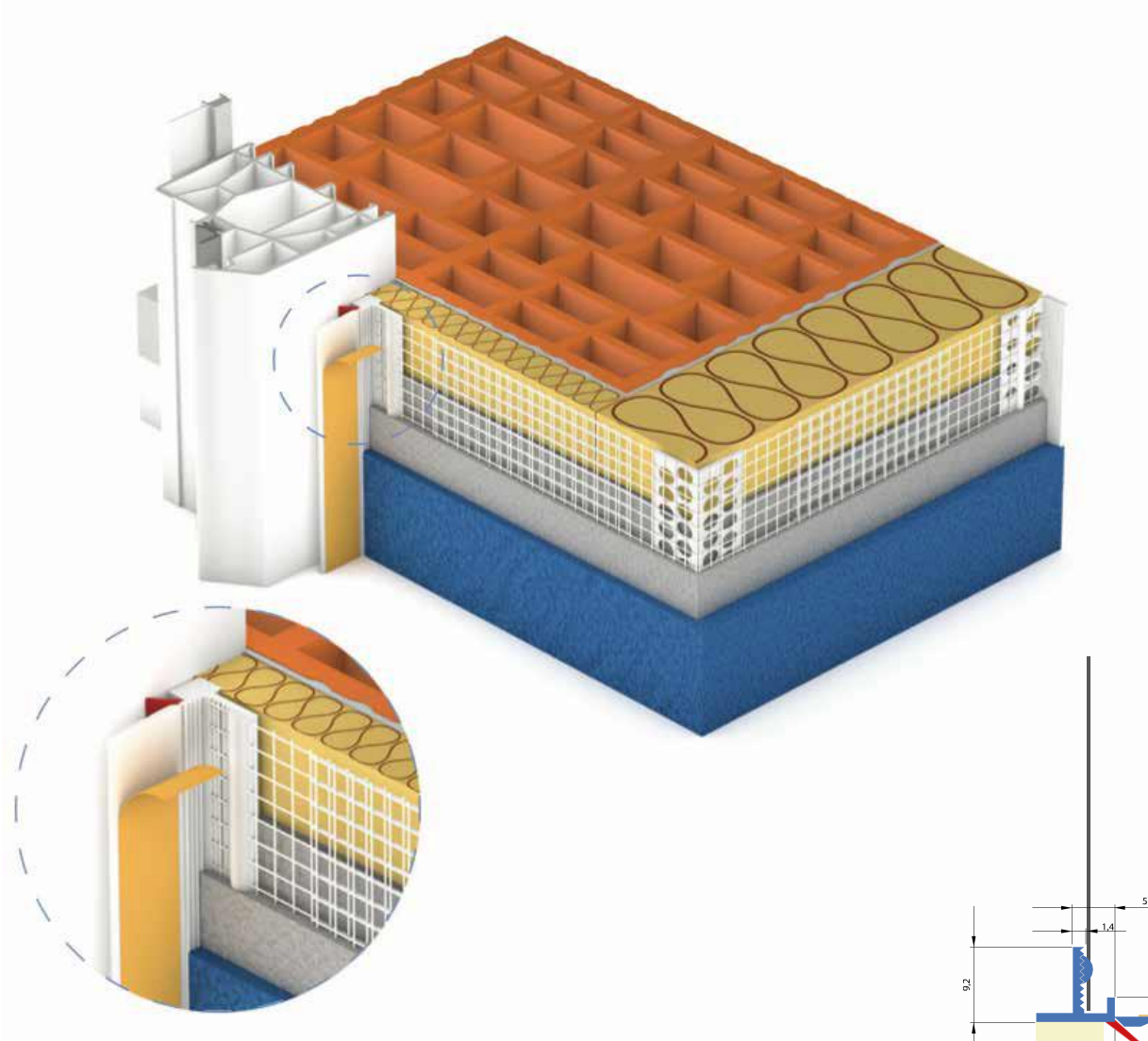
## 2. DESCRIPTION

Self-adhesive PVC profile with welded VWS fabric and a protective TPE band.  
**Conforms to Standard UNI 1175:2018 CLASS 2D.**

## 3. USE

Used on the window frame as a tight fitting on the plaster sash. It is equipped with a removable adhesive protective flap that allows the glass to be protected during smoothing.  
 It promotes the reduction of thermal bridges and absorbs expansion.

WINDOW PROFILE WITH MESH



4. SPECIFICATION ITEMS

Entry	Description	U.M.	Price
Dak.B.ZIN33.179x	Self-adhesive PVC profile with welded VWS fabric and a protective TPE band. Conforms to Standard UNI 1175:2018 CLASS 2D.		
Dak.B.ZIN33.1797	Dimensions 2,400 mm.....	cf.	-
Dak.B.ZIN33.1798	Dimensions 2,400 mm.....	cf.	-