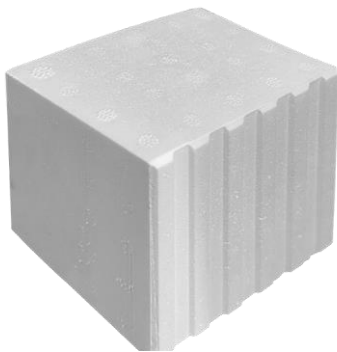


DK-FIX QUADRO



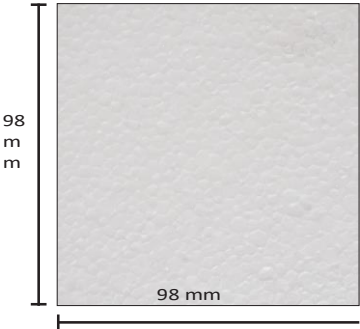
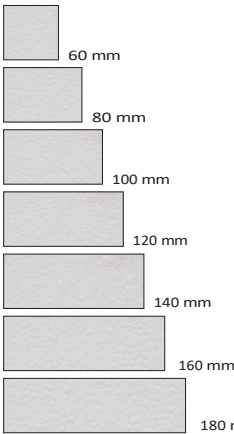
INDEX

- 1. Data and Documentation
- 2. Description
- 3. Use
- 4. Suitable loads
- 5. Thermal conductivity
- 6. Specifications

1. DATA AND DOCUMENTATION

Code	Description	Dimensions (mm)	Weight (kg / m³)	Colour	Pkg. / Pallet
ZIN35-1756/6	DK-FIX Quadro	60 x 98 x 98	160	White	1 pc. / - pcs.
ZIN35-1756/8	DK-FIX Quadro	80 x 98 x 98	160	White	1 pc. / - pcs.
ZIN35-1756/10	DK-FIX Quadro	100 x 98 x 98	160	White	1 pc. / - pcs.
ZIN35-1756/12	DK-FIX Quadro	120 x 98 x 98	160	White	1 pc. / - pcs.
ZIN35-1756/14	DK-FIX Quadro	140 x 98 x 98	160	White	1 pc. / - pcs.
ZIN35-1756/16	DK-FIX Quadro	160 x 98 x 98	160	White	1 pc. / - pcs.
ZIN35-1756/18	DK-FIX Quadro	180 x 98 x 98	160	White	1 pc. / - pcs.

MATERIAL Cylinder made of high-density EPS (polystyrene).



DK-FIX QUADRO

2. DESCRIPTION

DK-FIX Quadro EPS blocks are particularly suitable for the external installation of elements without a thermal bridge, both in expanded polystyrene (EPS) and rock wool thermal insulation systems. They also function as a support shim in the case of intermediate loads.

DK-FIX Quadro blocks are expansion-moulded EPS blocks with a high specific weight.

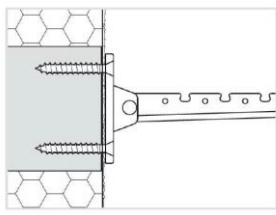
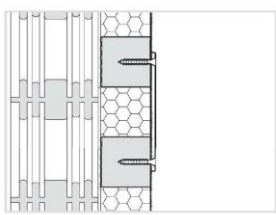
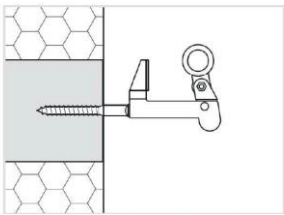
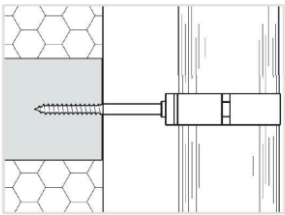
3. USE

DK-FIX Quadro EPS blocks are used as support thicknesses for high compressive loads as well as mounting elements in a thermal insulation system made of expanded polystyrene (EPS) and rock wool.

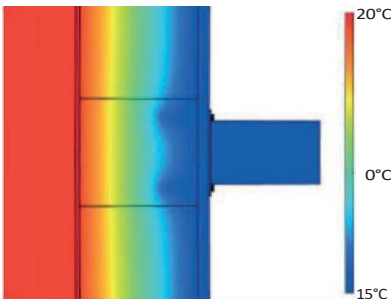
For the screw connections in the DK-FIX cylinders, wood screws or sheet metal screws (0.15 kN (approx. 15 kg)), with cylindrical or coarse thread (adjusting screws) can be used.

4. SUITABLE LOADS

- DK-FIX is suitable for
- Pipe clamps, gutters
 - Stops and latches
 - Hanging objects
 - Number plates, advertising signs
 - Outdoor lights, alarms, cameras



5. THERMAL CONDUCTIVITY



Features
Fire behaviour according to DIN 4101: B2

Heat transfer
Thermal conductivity
(measured value): 0.051 W/mK

Overall coefficient of the transfer reference point
of heat [w / k] Following the technical report EOTA TR 025

0 mm	60	80	100	120	140	160	λ80 λ	200	220	240	260	280	300
100 x 100	6.70	5.05	3.77	2.79	2.08	1.60	1.29	1.12	1.04	1.00	0.96	0.88	0.70
150 x 100	8.10	6.20	4.69	3.54	2.69	2.10	1.71	1.48	1.36	1.30	1.25	1.17	1.00

DK-FIX QUADRO

6. SPECIFICATION ITEMS

Entry	Description	Unit	Price
Dak.B.ZIN35.1756/x	Supply and installation of DK-FIX Multi Tondo cylinders, used as support shims for high compressive loads, as well as mounting elements in a polystyrene foam (EPS) and rock wool thermal insulation system. Dimensions are 90 - x 1,000 mm, divisible into parts in the desired thickness. Packaged in boxes. Cylinder made of high-density EPS (polystyrene). Used for the insertion of medium-load elements. Recommended load capacity with wood or sheet metal screws 0.15 kN (approx. 15 kg).	pc.	-
Dak.B.ZIN35.1756/6	DK-FIX Quadro 60 x 98 x 98.....	pc.	-
Dak.B.ZIN35.1756/8	DK-FIX Quadro 80 x 98 x 98.....	pc.	-
Dak.B.ZIN35.1756/10	DK-FIX Quadro 100 x 98 x 98.....	pc.	-
Dak.B.ZIN35.1756/12	DK-FIX Quadro 120 x 98 x 98.....	pc.	-
Dak.B.ZIN35.1756/14	DK-FIX Quadro 140 x 98 x 98.....	pc.	-
Dak.B.ZIN35.1756/16	DK-FIX Quadro 160 x 98 x 98.....	pc.	-
Dak.B.ZIN35.1756/18	DK-FIX Quadro 180 x 98 x 98.....	pc.	-