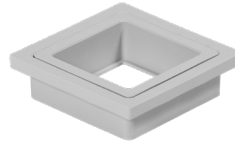
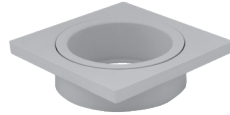
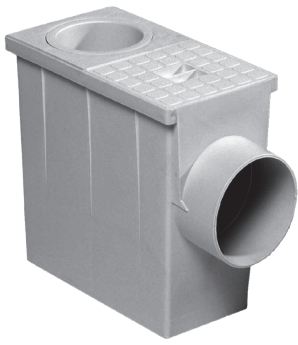


PLUVIAL CATCH-PIT



INDEX

1. Code registry
2. Description
3. Use
4. Technical specification

1. CODE REGISTRY

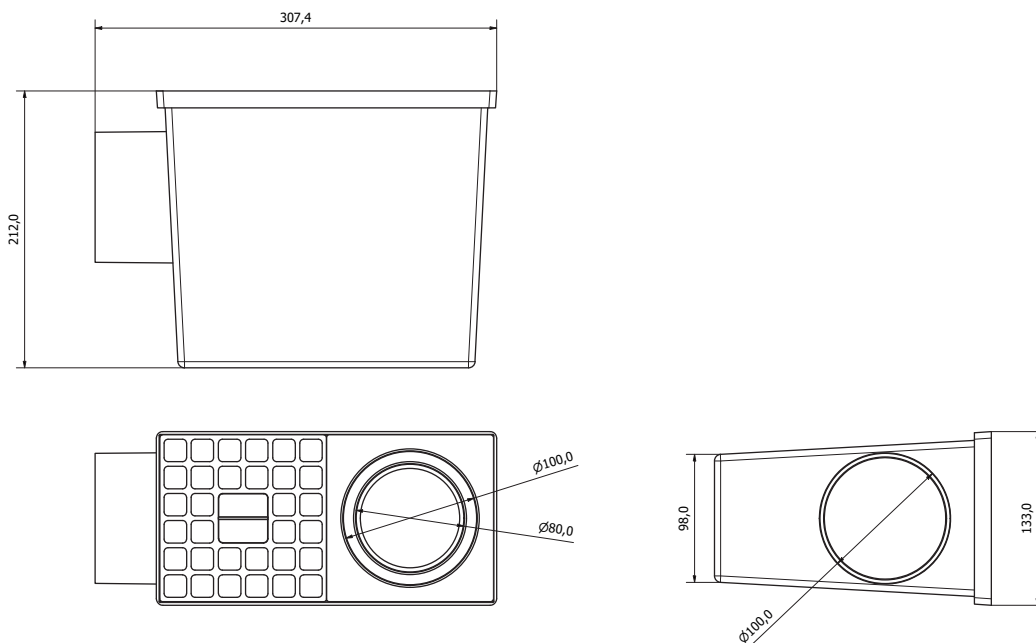
Code	Description	Dimensions (mm)	Weight [kg/pc.]	Colour	Pkg. / Pallet
TER06-1385	Pluvial Catch-Pit with inlet 80-100	133 x 307,4 x 212	0,910	Grey	18 pc. / 216 pcs
TER06-1385N	Pluvial Catch-Pit with inlet 80-100 - Black	133 x 307,4 x 212	0,910	Black	18 pc. / 216 pcs
TER06-1385S	Pluvial Catch-Pit Export with inlet 90-110	133 x 307,4 x 212	0,910	Grey	18 pc. / 216 pcs
TER06-1390	Rounded Junction	∅ 80-100	0,132	Grey	50 pc. / - pc.
TER06-1390S	Export Rounded Junction	∅ 90-110	0,114	Grey	50 pc. / - pc.
TER06-1391	Square Junction	∅ 80-100	0,132	Grey	50 pc. / - pc.
TER06-1392	Rounded outlet Junction from 100 to 110	∅ 110	0,038	Grey	84 pc. / - pc.

MATERIAL

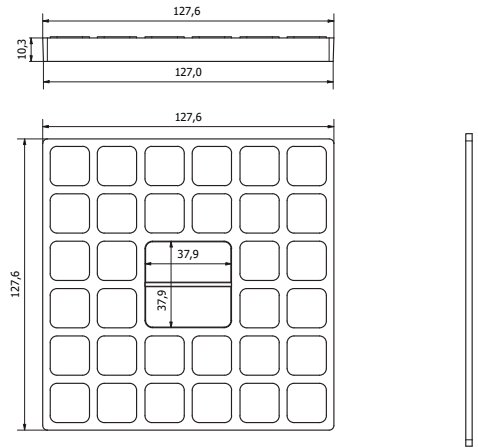
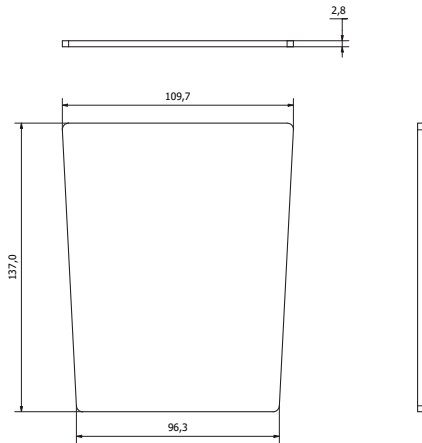
Made of PP (polypropylene).

2. DESCRIPTION

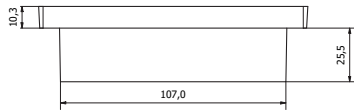
The eco-pluvial catch-pit is an item for the collection and vertical runoff of the rain water. It allows the disposal of water from the rain pipe of the gutter. It consists of anti-reflux bulkhead, removable leaf-guard to collect leaves or debris, perimeter reinforced with counterforce, cover with multi-diameter inlet predisposition (80, 90, 100, 110, 120, 125 mm), "open-closed" cover (customizable) and outlet diameter 100-100 mm.



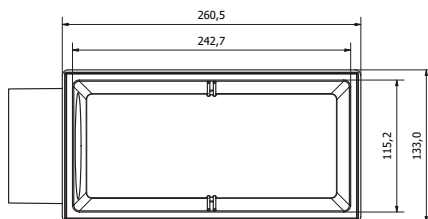
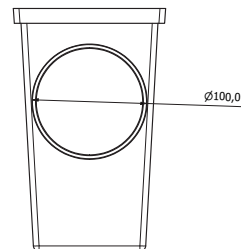
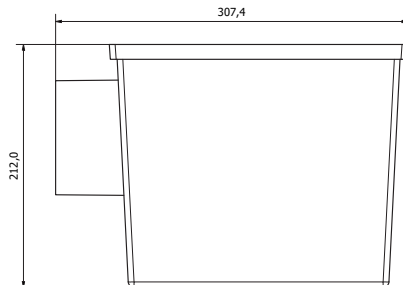
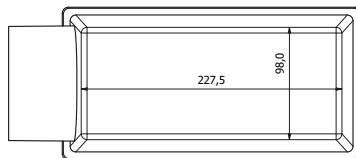
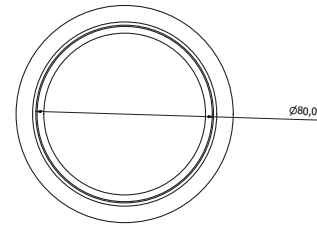
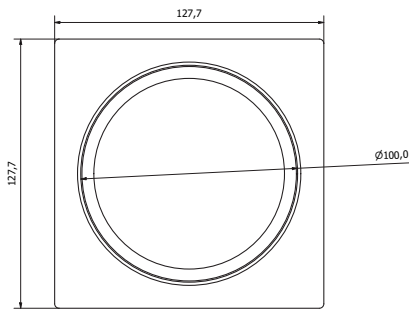
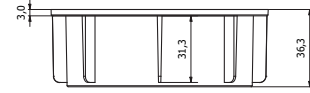
PLUVIAL CATCH-PIT



TER06-1385C



TER06-1385C



PLUVIAL CATCH-PIT

3. USE

Used as an element for the collection of rainwater from the rain pipe of the gutter, directly connected to the water system in the ground.

4. TECHNICAL SPECIFICATION

Specification	Description	Unity	Price
Dak.D.TER06.1385x	Supply and installation of pluvial catch-pit is studied for the collection and horizontal runoff of the rain water. It allows the disposal of water from the rain pipe of the gutter. The bulkhead (provided with the catch-pit) allows a perfect siphoning effect, thus avoiding the return of bad odours. Moreover, it can be easily removed for inspection and/or cleaning. Made of PP (polypropylene). Used as an element for the collection of rainwater from the rain pipe of the gutter, directly connected to the water system in the ground. Dimension 133 x 307,4 x 212 mm.....		
Dak.D.TER06.1385	Inlet 80-100 - Grey.....	pc.	-
Dak.D.TER06.1385N	Inlet 80-100 - Black.....	pc.	-
Dak.D.TER06.1385S	inlet 90-110 - Grey.....	pc.	-