

LEVEL UP - WOOD



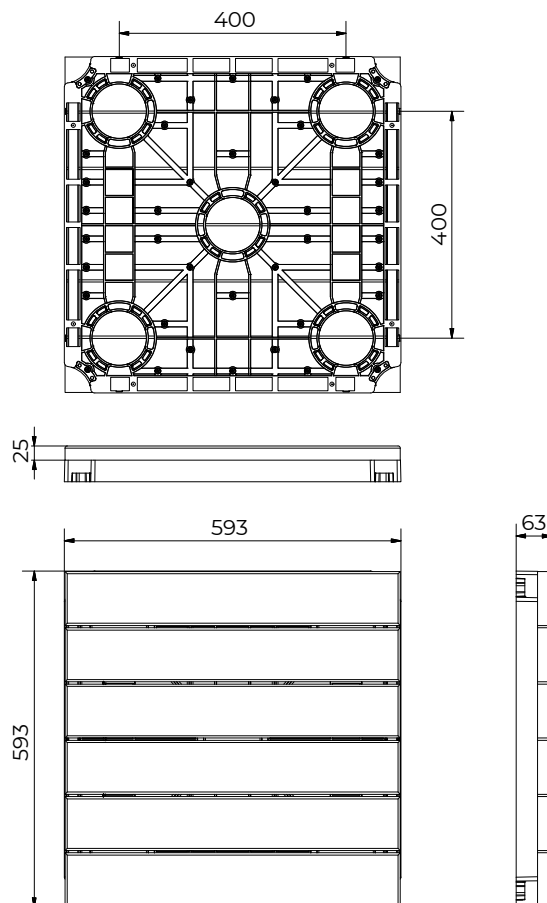
INDEX

1. Code Registry
2. Product Description
3. Accessories
4. Technical Specification

1. CODE REGISTRY

Code	Description	Material	Measure (mm)	Weight	Colour	Pkg. / Pallet
LV014	Tile made in thermotreated pine	PP (polypropylene) + pine	600 x 600 x 63	- kg/pc.	Black	1 pc. / 72 pcs.
LV015	Tile made in thermotreated ash	PP (polypropylene) + ash	600 x 600 x 63	- kg/pc.	Black	1 pc. / 72 pcs.
LV170/PZ	Tile made in WPC Shield Beach	PP (polypropylene) + WPC	600 x 600 x 61	- kg/pc.	Black	1 pc. / - pcs.
LV172/PZ	Tile made in WPC Shield Silver	PP (polypropylene) + WPC	600 x 600 x 61	- kg/pc.	Black	1 pc. / - pcs.

LV014/015



LEVEL UP - WOOD

2. PRODUCT DESCRIPTION

It is composed by thermo-treated wooden deck boards with a smooth finishing (pine or ash wood essence).

The base structure is 21 mm thick, with a PP support of 38 mm thickness, which is adjustable to the required height.

The main structure and deck boards are joined together by 36 fixing points.

4 thermo-treated wood tiles correspond to 1,44 sq. m, with a standard tolerance of 2,78 pc/sq. m.

2a. THE HEAT-TREATMENT:

The heat treatment process is carried out by subjecting the wood to high temperatures up to 250 ° C, in a suitable oven made of stainless steel, in a controlled atmosphere devoid of oxygen, without the use of chemicals, inducing heat, steam and water only.

The thermo-treatment changes the chemical structure of wood essence, varying its physical and mechanical properties; the high temperature, in fact, determines the deterioration of the wood component more reactive to water, thereby reducing the possibility that the essence suffers shrinkage and swelling or cracking.

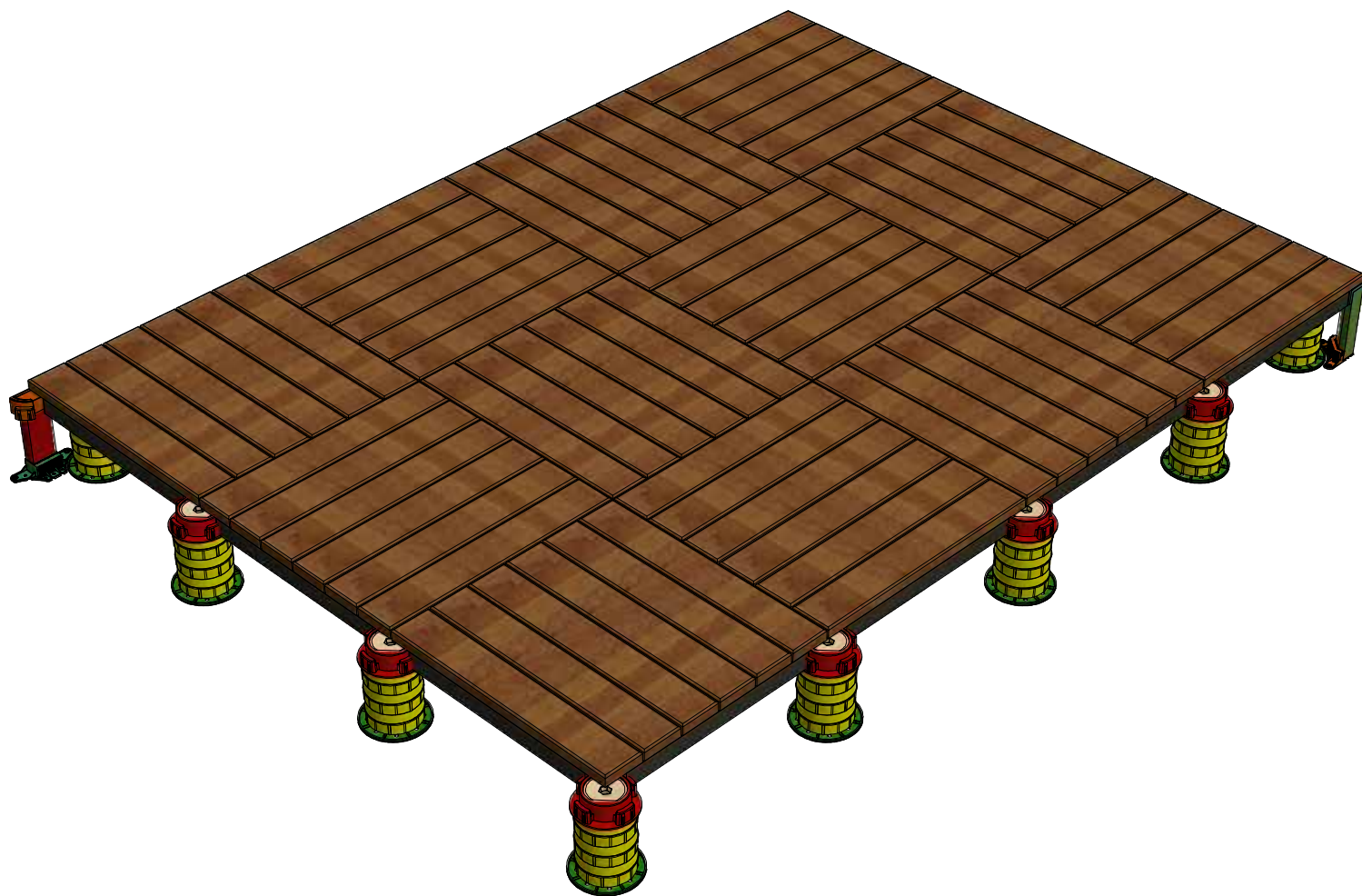
Thanks to the thermo-treatment, the material turns roasted coffee brown uniformly, depending on the temperature intensity, with excellent dimensional stability.

The durability characteristics get improved to approach to the best tropical woods, thus making the product suitable to withstand any rigid or humid climate and extreme resistant to the attack by insects, molds and mycoses typical of wood. In one word: perfect for outdoor use.

The heat treatment does not prevent the wood for becoming gray. Therefore, as with any other wood, oil application, or natural stain or solvent is recommended to preserve the colour.

However, the graying does not affect the durability of wood.

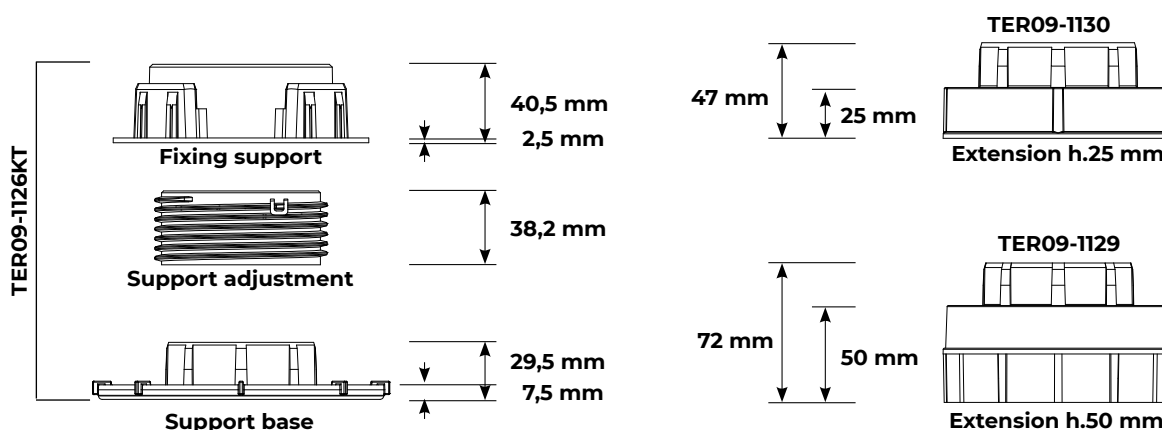
The slatted outdoor floor is installed in a floating mode with a sub-structure made up of aluminium strips, or heat-treated wood and retractable clips in stainless steel (or visible screws).



LEVEL UP - WOOD

3. ACCESSORIES

Code	Description	Material	Measure (mm)	Weight	Colour	Pkg. / Pallet
TER09-1126KT	Base + Screw + Fixing Head	PP (polypropylene)	from 69 to 95	- kg/pc.	Black	38 pcs. / 570 pcs.
TER09-1130	Extension h. 25	PP (polypropylene)	25	- kg/pc.	Black	38 pcs. / 1.520 pcs.
TER09-1129	Extension h. 50	PP (polypropylene)	50	- kg/pc.	Black	38 pcs. / 720 pcs.
TER09-1133	Fixed ring	PP (polypropylene)	ø 123 - height 40	- kg/pc.	Black	100 pcs. / 3.000 pcs.
TER09-1144	Insulation Noise Reducer	rubber (TPV).	200 x 200 - thick. 3	- kg/pc.	Black	80 pcs. / 6.720 pcs.



4. TECHNICAL SPECIFICATION

Specification	Description	Unit	Price
Dak.O.LVxxx	Supply and installation of a system designed for the installation of 600 x 600 mm tiles in thermotreated wood or WPC Shield on a floating raised floor. Level up Wood is distinguished by the load-bearing structure made of specifically designed material. It guarantees the highest safety standards even in case of breakage without the application of any reinforcement system. Level Up wood is available in 2 differents kind of finishing: Thermotreated wood or WPC. Dimensions 600 x 600 mm.....		
Dak.O.LV014	Tile made in thermotreated pine.....	pc.	-
Dak.O.LV015	Tile made in thermotreated ash.....	pc.	-
Dak.O.LV170/PZ	Tile made in WPC Shield Beach.....	pc.	-
Dak.O.LV172/PZ	Tile made in WPC Shield Relax.....	pc.	-
Dak.O.TER09.1126KT	Raising system for Level Up laying module, for height from 48 to 74 mm.....	pc.	-
Dak.O.TER09.1130	Extension made of PP, h.25 mm.....	pc.	-
Dak.O.TER09.1129	Extension made of PP, h.50 mm.....	pc.	-
Dak.O.TER09.1133	Fixed support made of PP, ø 123 - h. 40 mm.....	pc.	-
Dak.O.TER09.1144	Sound absorbing mat made of TPV Rubber, 200 x 200 - thick. 3 mm.....	pc.	-